



# American Sensor Technologies Standard Electrical Connections For AST Pressure Products

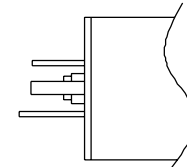
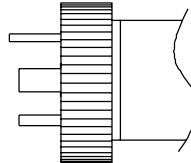
DIN

	mV	Voltage			4-20mA
		0.5-4.5V ratiometric	1-5V, 1-6V, 0-5V	0-10V, 1-10V	
Supply Voltage	5VDC typ., 10VDC max.	5VDC $\pm$ 0.01V	10-28VDC	15-28VDC	10-28VDC
Output Load	>1 M $\Omega$	>10 K $\Omega$	>10 K $\Omega$	>10 K $\Omega$	0-800 $\Omega$
Operating Temperature	-40 to 105°C	-40 to 85°C	-40 to 85°C	-40 to 85°C	-40 to 85°C

Hirschmann
AST Electrical Connection option
Mates with
AST Mating Connector Part Number
Available on AST Models:

DIN 43650A 18.0mm
"I"
Hirschmann 931 970-100 [conduit] or equivalent
A04598 [for Class 1 Div 2 applications]
AST4000/4200/4300/4310/43LP/4400/4410/44LP/4700/4710/47LP/47HP/1000/5400/20HA/20PT

Mini-DIN 43650C 8.0mm
"E"
Hirschmann 933 023-100
A01980
AST4000/4200/4400/4410/44LP/4700/4710/47LP/47HP/4900/1000/5400/AG200/2000/20HA/20PT



Hirschmann
<b>Output Type</b>
mV & 4-Wire Voltage
3 Wire Voltage
4-20mA (2 wire loop powered)
4-20mA (3 wire, available on the AST5400 only)

DIN43650A 18.0mm				
Pin 1	Pin2	Pin 3	Wide Pin	
+S	GND	+V	-S	
+V	GND	S	N/C	
+V	GND	N/C	N/C	
+V	GND	S	N/C	

Mini-DIN 43650C 8.0mm			
Pin 1	Pin 2	Pin 3	Wide Pin
-S	GND	+V	+S
S	GND	+V	N/C
N/C	GND	+V	N/C
S	GND	+V	N/C

S= Output Signal  
V= Voltage Supply  
N/C= Not Connected

